

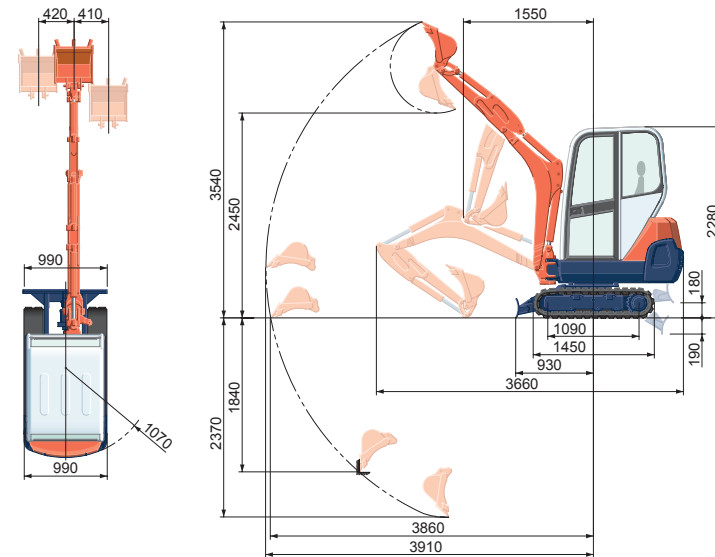
SPECIFICATIONS

Model		KX41-3S		KX41-3V	
Machine weight	Cabin	kg	1610	1720	
	Canopy	kg	1520	1630	
Bucket capacity, std. SAE/CECE		m ³	0,04		
Bucket width	with side teeth	mm	474		
	without side teeth	mm	450		
Model		D902-BH			
Type		Water-cooled, diesel engine E-TVCS			
Engine	Output ISO9249	PS/rpm	16/2300		
		kW/rpm	11,8/2300		
	Number of cylinders	3			
	Bore x stroke	mm	72 x 73,6		
Displacement		cc	898		
Overall length		mm	3660		
Overall height	Cabin	mm	2280		
	Canopy	mm	2280		
Swivelling speed		rpm	9,1		
Rubber shoe width		mm	230		
Tumbler distance		mm	1090	1230	
Dozer size (width x height)		mm	990 x 230	990/1300 x 230	
Hydraulic pumps	P1, P2		Variable displacement pump		
	Flow rate	ℓ/min	17,3		
	Hydraulic pressure	MPa(kgf/cm ²)	21,6 (220)		
	P3		Gear type		
Max. digging force	Arm	daN (kgf)	780 (796)		
	Bucket	daN (kgf)	1560 (1592)		
Boom swing angle (left/right)		deg	73/50		
Auxiliary circuit	Flow rate	ℓ/min	27,7		
	Hydraulic pressure	MPa(kgf/cm ²)	21,6 (220)		
Hydraulic reservoir		ℓ	27		
Fuel tank capacity		ℓ	21		
Max. travelling speed	Low	km/h	2,4	2,2	
	High	km/h	4,3	4,0	
Ground contact pressure	Cabin	kPa(kgf/cm ²)	27,5 (0,28)	26,9 (0,27)	
	Canopy	kPa(kgf/cm ²)	25,7 (0,26)	25,5 (0,26)	
Ground clearance		mm	160		

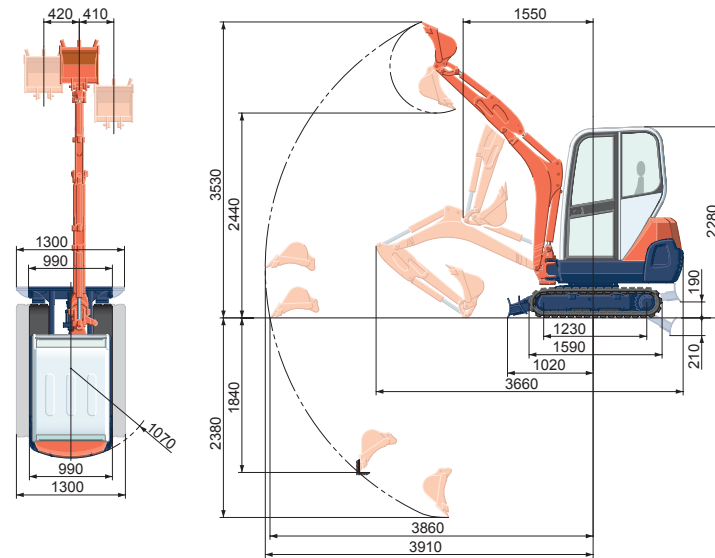
*Rubber shoe type

WORKING RANGE

KX41-3S



KX41-3V



Unit: mm

KUBOTA MINI-EXCAVATOR

KX41-3S

KX41-3V



LIFTING CAPACITY

Lift Point Height	Lifting point radius (2m)						Lifting point radius (3m)			
	Over-front			Over-side	Over-front			Over-side		
	Blade Down	Blade UP	Blade Down		Blade UP					
S	1,5m	260 (0,26)	260 (0,26)	260 (0,26)	270 (0,28)	190 (0,20)	150 (0,16)			
	1,0m	410 (0,42)	360 (0,37)	280 (0,28)	280 (0,29)	190 (0,19)	150 (0,15)			
	0,5m	520 (0,53)	340 (0,34)	260 (0,26)	290 (0,30)	180 (0,19)	140 (0,15)			
	0m	530 (0,54)	320 (0,33)	240 (0,25)	280 (0,29)	180 (0,18)	140 (0,14)			
V	1,5m	310 (0,32)	310 (0,32)	310 (0,32)	340 (0,35)	210 (0,22)	230 (0,24)			
	1,0m	510 (0,52)	400 (0,41)	420 (0,43)	360 (0,37)	210 (0,21)	230 (0,23)			
	0,5m	650 (0,67)	380 (0,39)	410 (0,42)	370 (0,38)	210 (0,21)	230 (0,23)			
	0m	680 (0,69)	370 (0,38)	400 (0,40)	370 (0,37)	200 (0,21)	220 (0,23)			

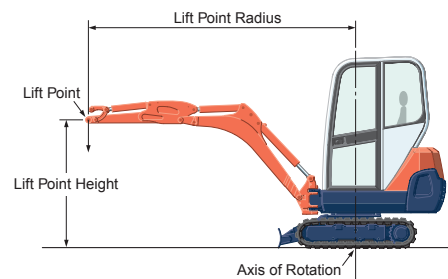
Please note:

* The lifting capacities are based on ISO 10567 and do not exceed 75% of the static tilt load of the machine or 87% of the hydraulic lifting capacity of the machine.

* The excavator bucket, hook, sling and other lifting accessories are not included on this table.

* Working ranges are with Kubota standard bucket, without quick coupler.

* Specifications are subject to change without notice for purpose of improvement.



KUBOTA EUROPE S.A.S
19 à 25, Rue Jules - Vercruysse -
Zone Industrielle - B.P. 50088 95101
Argenteuil Cedex France
Téléphone : (33) 01 34 26 34 34
Télécopieur : (33) 01 34 26 34 99

KUBOTA (U.K.) LTD
Dormer Road, Thame Oxfordshire,
OX93UN, U.K.
Phone : (44) 01844-268140
F a x : (44) 01844-216685

KUBOTA Baumaschinen GmbH
Steinhauser Straße 100
D-66482 Zweibrücken Germany
Telefon : (49) 0 63 32 - 487 - 312
F a x : (49) 0 63 32 - 487 - 101